



ORTHOMETRIC®

Helping the World Smile

PRODUCT **CATALOG**



| | |
|----------------|----|
| Archwires | 3 |
| Metal Brackets | 9 |
| Tubes | 20 |
| Bands | 26 |
| Accessories | 32 |
| Elastics | 36 |
| Adhesive | 44 |

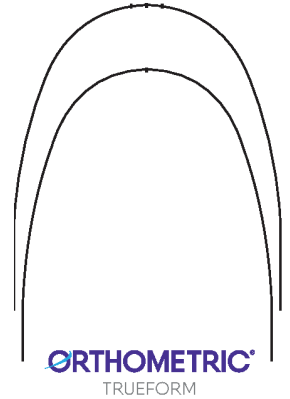




Intraoral Arch

FlexyNiTi

SUPER ELASTIC



ORTHODONTIC ARCHWIRES

FLEXY NiTi SUPER ELASTIC INTRAORAL ARCHWIRE

| DIMENSIONS | | UPPER | LOWER | QTY |
|--------------------------|---------------|------------|------------|-----|
| <input type="radio"/> | 0.012" | 51.10.2012 | 52.10.2012 | 10 |
| <input type="radio"/> | 0.014" | 51.10.2014 | 52.10.2014 | 10 |
| <input type="radio"/> | 0.016" | 51.10.2016 | 52.10.2016 | 10 |
| <input type="radio"/> | 0.018" | 51.10.2018 | 52.10.2018 | 10 |
| <input type="radio"/> | 0.020" | 51.10.2020 | 52.10.2020 | 10 |
| <input type="checkbox"/> | 0.016"x0.016" | 51.10.2116 | 52.10.2116 | 10 |
| <input type="checkbox"/> | 0.016"x0.022" | 51.10.2216 | 52.10.2216 | 10 |
| <input type="checkbox"/> | 0.017"x0.025" | 51.10.2517 | 52.10.2517 | 10 |
| <input type="checkbox"/> | 0.018"x0.025" | 51.10.2518 | 52.10.2518 | 10 |
| <input type="checkbox"/> | 0.019"x0.025" | 51.10.2519 | 52.10.2519 | 10 |
| <input type="checkbox"/> | 0.021"x0.025" | 51.10.2521 | 52.10.2521 | 10 |

ROUND

SQUARE

RECTANGULAR

ORTHOMETRIC ARCHWIRE – SS

Orthometric SS archwires are manufactured with a superior Nickel-Chrome alloy (Stainless Steel) that provides excellent surface finish and polish, ensuring the high quality of the product. The archwires have the characteristics of surface gloss and good formability, weldability and strength.

Application and Benefits

Indicated for the treatment of sagittal, transverse and vertical dental and skeletal malocclusions.

The pre-contoured archwires feature well-defined shapes that allow for safe and comfortable alignment and leveling for the patient. The excellent surface finish and polishing enables sliding mechanics and bends and loops with torque control. The properties of the steel archwires make them ideal for the finalization phase to provide the occlusion detailing finish.

DIFFERENTIALS:

- Surface finish and polishing;
- Diagrams with functional format;
- Excellent mechanical properties.



INTRAORAL ARCHWIRE ORTHOMETRIC - SS

| | DIMENSIONS | UPPER | LOWER | QTY. |
|---|-----------------|------------|------------|------|
| ○ | 0.012" | 51.50.2012 | 52.50.2012 | 10 |
| ○ | 0.014" | 51.50.2014 | 52.50.2014 | 10 |
| ○ | 0.016" | 51.50.2016 | 52.50.2016 | 10 |
| ○ | 0.018" | 51.50.2018 | 52.50.2018 | 10 |
| ○ | 0.020" | 51.50.2020 | 52.50.2020 | 10 |
| □ | 0.016" x 0.016" | 51.50.2116 | 52.50.2116 | 10 |
| □ | 0.016" x 0.022" | 51.50.2216 | 52.50.2216 | 10 |
| □ | 0.017" x 0.025" | 51.50.2517 | 52.50.2517 | 10 |
| □ | 0.018" x 0.025" | 51.50.2518 | 52.50.2518 | 10 |
| □ | 0.019" x 0.025" | 51.50.2519 | 52.50.2519 | 10 |
| □ | 0.021" x 0.025" | 51.50.2521 | 52.50.2521 | 10 |

○ ROUND □ SQUARE □ RECTANGULAR



ORTHOMETRIC LIGATURE WIRE - SS CrNi

Orthometric SS ligature wires are manufactured with a Nickel-Chrome alloy (304L Stainless Steel) that provides an excellent surface finish and polish, ensuring the high quality of the product.

Application and Benefits

- Fastening of the archwires to the brackets;
- Conjugated ties;
- Attachment of accessory devices to the molar tubes;
- Establish the force application point when using cantilevers and base intrusion archwires;
- Composition of force torques;
- Traction of included teeth;
- Sliding mechanics.

DIFFERENTIALS:

- Finish and polishing;
- In roll form, facilitating professional performance;
- Strength and flexibility.



FIO AMARRILHO ORTHOMETRIC - SS

| DIMENSIONS | CODE | QTY. |
|-----------------------|------------|------|
| 0.008" - 0.20mm (40g) | 55.14.0008 | 1 |
| 0.010" - 0.25mm (40g) | 55.14.0010 | 1 |
| 0.012" - 0.30mm (40g) | 55.14.0012 | 1 |





METAL BRACKETS



TECHNOLOGY, PRECISION AND EFFICIENCY

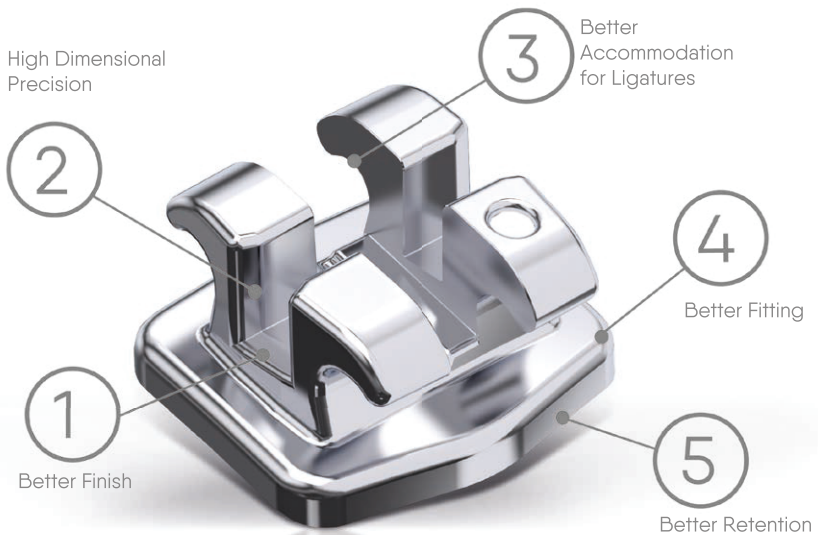
Advanced Series is Orthometric's metal bracket, produced with the most modern metallurgy process (MIM) that allows gathering all quality and technology requirements in a single piece.

The excellent retention, the precision of the prescriptions and the anatomical design achieved with this production process provide a much more efficient and comfortable treatment.

As a result of our policy of continuous improvement, the Advanced Series brackets now receive an exclusive laser texturing process at their base, which increases the exclusive retention area, ensuring greater adhesion efficiency and providing greater safety for orthodontists.

The improvements achieved in this process resulted in:

DIFFERENTIALS:



BETTER FINISH AND HIGH PRECISION

The high-speed machining technology employed in the construction of the molds for the Advanced Series brackets, added to the practices in the MIM (Metal Injection Molding) manufacturing process, result in an extremely precise product in terms of prescriptions and with an excellent surface finish.



BETTER FITTING AND RETENTION

The anatomical base of the bracket results in a better fit.

The curvatures in the mesiodistal and occlusogingival directions provide greater comfort, in addition to facilitating the smoothing of the edges.

The design of the retaining pins ensures even greater adhesion efficiency, resulting in greater safety for the professional.

The exclusive laser texturing process of the base increases retention, providing better adhesion and safety for the orthodontist.





BETTER ACCOMMODATION FOR LIGATURES AND BETTER COMFORT

The design of the twin wings allows for better accommodation and retention of elastic ligatures.

As they are distinct (twin), they also provide better rotational control and less friction.

Its low profile with hooks and rounded edges ensures total comfort for the patient, in addition to facilitating hygiene.



IDENTIFICATION BY COLOR

The color identification system follows the industry standard, making the identification of brackets simpler.





MBT 0.022" | SLOT 0.022" x 0.028" (0.56 x 0.71mm)

| | | | | | | | | | | | |
|--------------------|------------|-------------|-----------|-----------|-----------|-----------|-----------|-----------|-----------|------------|-------------|
| | Torque | -7° | -7° | 0° | 8° | 17° | 17° | 10° | 0° | -7° | -7° |
| | Angle | 0° | 0° | 0° | 8° | 4° | 4° | 8° | 0° | 0° | 0° |
| | Hook | ✓ | ✓ | ✓ | - | - | - | - | ✓ | ✓ | ✓ |
| | Width (mm) | 2.8 | 2.8 | 2.8 | 2.8 | 2.8 | 2.8 | 2.8 | 2.8 | 2.8 | 2.8 |
| Rep. Code 0.022" ▶ | | 10.112514 | 10.112514 | 10.112513 | 10.112512 | 10.112511 | 10.112521 | 10.112522 | 10.112523 | 10.112524 | 10.112524 |
| Quantity ▶ | | 10 units | 10 units | 10 units | 10 units | 10 units | 10 units | 10 units | 10 units | 10 units | 10 units |
| | | 5 15 | 4 14 | 3 13 | 2 12 | 1 11 | 1 21 | 2 22 | 3 23 | 4 24 | 5 25 |
| | | U45R | U45R | U3R | U2R | U1R | U1L | U2L | U3L | U45L | U45L |
| Maxillary | | | | | | | | | | | |
| | | Upper Right | | | | | | | | Upper Left | Lower Right |
| Mandibular | | | | | | | | | | | |
| | | 45 5 | 44 4 | 43 3 | 42 2 | 41 1 | 31 1 | 32 2 | 33 3 | 34 4 | 35 5 |
| | Torque | -17° | -12° | 0° | -6° | -6° | -6° | -6° | 0° | -12° | -17° |
| | Angle | 2° | 2° | 3° | 0° | 0° | 0° | 0° | 3° | 2° | 2° |
| | Hook | ✓ | ✓ | ✓ | - | - | - | - | ✓ | ✓ | ✓ |
| | Width (mm) | 2.8 | 2.8 | 2.8 | 2.4 | 2.4 | 2.4 | 2.4 | 2.8 | 2.8 | 2.8 |
| Rep. Code 0.022" ▶ | | 10.112545 | 10.112544 | 10.112543 | 10.112531 | 10.112531 | 10.112531 | 10.112531 | 10.112533 | 10.112534 | 10.112535 |
| Quantity ▶ | | 10 units | 10 units | 10 units | 10 units | 10 units | 10 units | 10 units | 10 units | 10 units | 10 units |

PACKAGING PRESCRIPTION



1CASE



50CASE



10CASE



100CASE





ROTH 0.022" | SLOT 0.022"x 0.028" (0.56 x 0.7mm)

ROTH 0.018" | SLOT 0.018"x 0.028" (0.46 x 0.7mm)

| | -7° | -7° | -2° | 8° | 12° | 12° | 8° | -2° | -7° | -7° |
|--------------------|-------------|------------|------------|------------|------------|------------|------------|------------|------------|------------|
| Torque | -7° | -7° | -2° | 8° | 12° | 12° | 8° | -2° | -7° | -7° |
| Angle | 0° | 0° | 11° | 9° | 5° | 5° | 9° | 11° | 0° | 0° |
| Hook | ✓ | ✓ | ✓ | - | - | - | - | ✓ | ✓ | ✓ |
| Width (mm) | 2.8 | 2.8 | 2.8 | 2.8 | 3.0 | 3.0 | 2.8 | 2.8 | 2.8 | 2.8 |
| Rep. Code 0.018" ▶ | - | - | - | 10.10.2612 | 10.10.2611 | 10.10.2621 | 10.10.2622 | - | - | - |
| Rep. Code 0.022" ▶ | 10.10.2514 | 10.10.2514 | 10.10.2513 | 10.10.2512 | 10.10.2511 | 10.10.2521 | 10.10.2522 | 10.10.2523 | 10.10.2524 | 10.10.2524 |
| Quantity ▶ | 10 units | 10 units | 10 units | 10 units | 10 units | 10 units | 10 units | 10 units | 10 units | 10 units |
| | 5 15 | 4 14 | 3 13 | 2 12 | 1 11 | 1 21 | 2 22 | 3 23 | 4 24 | 5 25 |
| | U46R | U46R | U3R | U2R | U1R | U1L | U2L | U3L | U46L | U46L |
| Maxillary | | | | | | | | | | |
| | Upper Right | | | | | | | | | Upper Left |
| | Lower Right | | | | | | | | | Lower Left |
| Mandibular | | | | | | | | | | |
| | 45 5 | 44 4 | 43 3 | 42 2 | 41 1 | 31 1 | 32 2 | 33 3 | 34 4 | 35 5 |
| | LSR | L4R | L3R | L2RL | L12RL | L12RL | L12RL | L3L | L4L | L5L |
| Torque | -22° | -17° | -11° | 0° | 0° | 0° | 0° | -11° | -17° | -22° |
| Angle | 0° | 0° | 5° | 0° | 0° | 0° | 0° | 5° | 0° | 0° |
| Hook | ✓ | ✓ | ✓ | - | - | - | - | ✓ | ✓ | ✓ |
| Width (mm) | 2.8 | 2.8 | 2.8 | 2.4 | 2.4 | 2.4 | 2.4 | 2.8 | 2.8 | 2.8 |
| Rep. Code 0.018" ▶ | - | - | - | 10.10.2631 | 10.10.2631 | 10.10.2631 | 10.10.2631 | - | - | - |
| Rep. Code 0.022" ▶ | 10.10.2545 | 10.10.2544 | 10.10.2543 | 10.10.2531 | 10.10.2531 | 10.10.2531 | 10.10.2531 | 10.10.2533 | 10.10.2534 | 10.10.2535 |
| Quantity ▶ | 10 units | 10 units | 10 units | 10 units | 10 units | 10 units | 10 units | 10 units | 10 units | 10 units |

PACKAGING PRESCRIPTION



1CASE



10CASES



100CASES



50CASES



PRECISION, EFFICIENCY AND GREATER COMFORT!

A classic bracket, three pieces welded by an exclusive laser welding technique.

Made of 17/4 PH surgical steel, meeting the highest quality standards globally.

Produced by a fully automated and very high technology CNC machining process, enabling sophisticated details, such as a very high precision slot individually sculpted, providing 100% accurate torques and angles in accordance with the requirements.

Mesh with 80-micron spacing, laser welded to the anatomical base, ensuring excellent fit and retention.

DIFFERENTIALS:

- Made of 17/4 steel;
- Mesh with 80-micron spacing;
- Innovative laser welding process;
- Low profile providing greater comfort;
- Anatomical design;
- Precision in angles and torques;
- Laser marking of the odontogram on the base;
- Identification of the midline (long axis).





Metal Bracket Premium ELITE

MBT 0.022" | SLOT 0.022"x 0.028" (0.56 x 0.71mm)

| | | | | | | | | | | |
|---------------------------------------|----------------------------|------------|------------|------------|------------|------------|------------|------------|------------|--------------------------|
| Torque Angle Hook Width (mm) | -7° | -7° | 0° | 10° | 17° | 17° | 10° | 0° | -7° | -7° |
| | 0° | 0° | 0° | 8° | 4° | 4° | 8° | 0° | 0° | 0° |
| | ✓ | ✓ | ✓ | - | - | - | - | ✓ | ✓ | ✓ |
| Rep. Code 0.022" ▶ | 11.21.2314 | 11.21.2314 | 11.21.2313 | 11.21.2312 | 11.21.2311 | 11.21.2321 | 11.21.2322 | 11.21.2323 | 11.21.2324 | 11.21.2324 |
| Quantity ▶ | 5 units | 5 units | 5 units | 5 units | 5 units | 5 units | 5 units | 5 units | 5 units | 5 units |
| | 5 15 | 4 14 | 3 13 | 2 12 | 1 11 | 1 21 | 2 22 | 3 23 | 4 24 | 5 25 |
| | U45R | U45R | U3R | U2R | U1R | U1L | U2L | U3L | U4L | U45L |
| Maxillary | | | | | | | | | | |
| | Upper Right Lower Right | | | | | | | | | Upper Left Lower Left |
| Mandibular | | | | | | | | | | |
| | 45 5 | 44 4 | 43 3 | 42 2 | 41 1 | 31 1 | 32 2 | 33 3 | 34 4 | 35 5 |
| | L5R | L4R | L3R | L2RL | L1RL | L1RL | L2RL | L3L | L4L | L5L |
| Torque Angle Hook Width (mm) | -17° | -12° | 0° | -6° | -6° | -6° | -6° | 0° | -12° | -17° |
| | 2° | 2° | 3° | 0° | 0° | 0° | 0° | 3° | 2° | 2° |
| | ✓ | ✓ | ✓ | - | - | - | - | ✓ | ✓ | ✓ |
| Rep. Code 0.022" ▶ | 11.21.2345 | 11.21.2344 | 11.21.2343 | 11.21.2331 | 11.21.2331 | 11.21.2331 | 11.21.2331 | 11.21.2333 | 11.21.2334 | 11.21.2335 |
| Quantity ▶ | 5 units | 5 units | 5 units | 5 units | 5 units | 5 units | 5 units | 5 units | 5 units | 5 units |

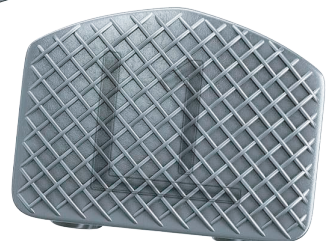
PACKAGING PRESCRIPTION



1CASE



10CASES



ROTH | STANDARD 0.022" | SLOT 0.022"x 0.028" (0.56 x 0.71mm)

ROTH 0.018" | SLOT 0.018"x 0.028" (0.46 x 0.71mm)

| | | | | | | | | | | | |
|--------------------|--------------|--------------|--------------|--------------|--------------|--------------|--------------|--------------|--------------|--------------|-----|
| | Torque | -7° | -7° | -2° | 8° | 12° | 12° | 8° | -2° | -7° | |
| | Angle | 0° | 0° | 11° | 9° | 5° | 5° | 9° | 11° | 0° | |
| | Hook | ✓ | ✓ | ✓ | - | - | - | - | ✓ | ✓ | |
| | Width (mm) | 2.8 | 2.8 | 2.8 | 2.8 | 3.1 | 3.1 | 2.8 | 2.8 | 2.8 | |
| Rep. Code 0.018" ▶ | - | - | - | 11.20.1312 | 11.20.1311 | 11.20.1321 | 11.20.1322 | - | - | - | |
| Rep. Code 0.022" ▶ | 11.20.2314 | 11.20.2314 | 11.20.2313 | 11.20.2312 | 11.20.2311 | 11.20.2321 | 11.20.2322 | 11.20.2323 | 11.20.2324 | 11.20.2324 | |
| Quantity ▶ | 5 units | 5 units | 5 units | 5 units | 5 units | 5 units | 5 units | 5 units | 5 units | 5 units | |
| | 5 ↓ 15 | 4 ↓ 14 | 3 ↓ 13 | 2 ↓ 12 | 1 ↓ 11 | 1 ↓ 21 | 2 ↓ 22 | 3 ↓ 23 | 4 ↓ 24 | 5 ↓ 25 | |
| | U4SR | U4SR | U3R | U2R | U1R | U1L | U2L | U3L | U4SL | U4SL | |
| Maxillary | | | | | | | | | | | |
| | Upper Right | Upper Right | Upper Right | Upper Right | Upper Right | Upper Left | Upper Left | Upper Left | Upper Left | Upper Left | |
| | Lower Right | Lower Right | Lower Right | Lower Right | Lower Right | Lower Left | Lower Left | Lower Left | Lower Left | Lower Left | |
| Mandibular | | | | | | | | | | | |
| | L5R | L4R | L3R | L2RL | L1RL | L2RL | L2RL | L3L | L4L | L5L | |
| | 45 ↓ 5 | 44 ↓ 4 | 43 ↓ 3 | 42 ↓ 2 | 41 ↓ 1 | 31 ↓ 1 | 32 ↓ 2 | 33 ↓ 3 | 34 ↓ 4 | 35 ↓ 5 | |
| | L5R | L4R | L3R | L2RL | L1RL | L2RL | L2RL | L3L | L4L | L5L | |
| | 45 | 44 | 43 | 42 | 41 | 31 | 32 | 33 | 34 | 35 | |
| | 5 ↓ | 4 ↓ | 3 ↓ | 2 ↓ | 1 ↓ | 1 ↓ | 2 ↓ | 3 ↓ | 4 ↓ | 5 ↓ | |
| | Torque | -22° | -17° | -11° | -1° | -1° | -1° | -1° | -11° | -17° | 22° |
| | Angle | 0° | 0° | 5° | 0° | 0° | 0° | 0° | 5° | 0° | 0° |
| | Hook | ✓ | ✓ | ✓ | - | - | - | - | ✓ | ✓ | ✓ |
| | Width (mm) | 2.8 | 2.8 | 2.8 | 2.3 | 2.3 | 2.3 | 2.3 | 2.8 | 2.8 | 2.8 |
| Rep. Code 0.018" ▶ | - | - | - | 11.20.1331 | 11.20.1331 | 11.20.1331 | 11.20.3131 | - | - | - | |
| Rep. Code 0.022" ▶ | 11.21.2345 | 11.21.2344 | 11.21.2343 | 11.21.2331 | 11.21.2331 | 11.21.2331 | 11.21.2331 | 11.21.2333 | 11.21.2334 | 11.21.2335 | |
| Quantity ▶ | 5 units | 5 units | 5 units | 5 units | 5 units | 5 units | 5 units | 5 units | 5 units | 5 units | |

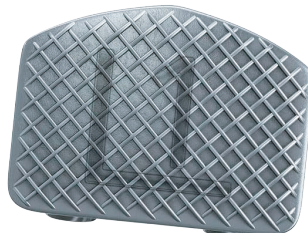
PACKAGING PRESCRIPTION



1CASE



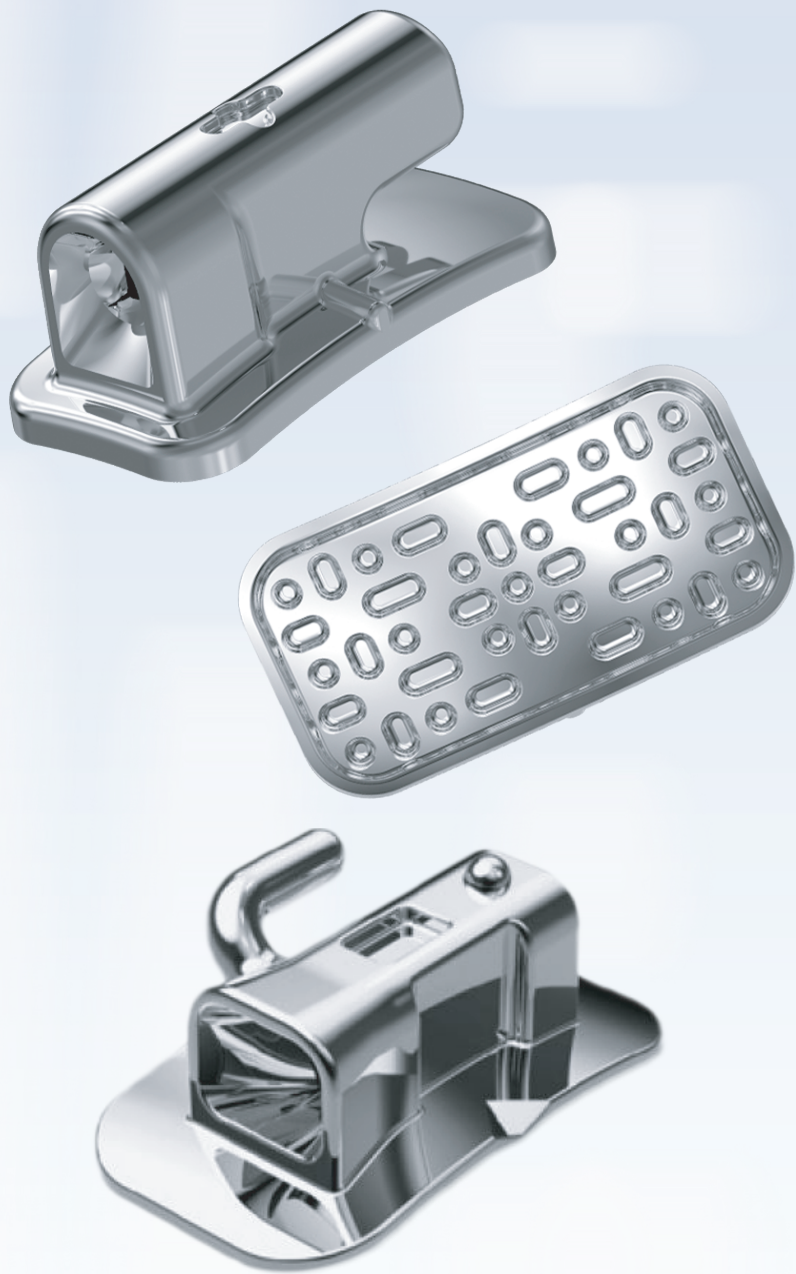
10CASES







ORTHODONTIC TUBES



TUBES

PremiumSeries®

TUBES WITH PREMIUM MESH BASE

Premium series tubes are manufactured from 17/4 PH surgical steel and produced using a high-tech machining process in three separate pieces, which are laser-welded. The end result is an accessory that combines quality and precision.

The anatomic base ensures excellent fit to the tooth surface and the mesh with 80-micron spacing provides good resin retention in the base.

Its low-profile design is responsible for providing comfort to the patient.

DIFFERENTIALS:

- Made of 17/4 PH steel;
- Machining process;
- 80-micron mesh;
- Innovative laser welding process;
- Low profile providing greater comfort;
- Anatomical design.





TUBES

PremiumSeries®

MBT 0.022" | SIMPLE, NON CONVERTIBLE TUBE

GLUING

| | PRESCRIPTION | USE | LENGHT | TUBE | TORQUE | DISTAL | QTY. | 0.22x0.28" |
|-------|--------------|-----|--------|------|--------|--------|------|----------------------------|
| Upper | MBT | 7 6 | 4 mm | - | -14° | 10° | 10 | 20.12.1016 |
| | MBT | 6 7 | 4 mm | - | -14° | 10° | 10 | 20.12.1026 |
| Lower | MBT | 7 6 | 4 mm | - | -20° | 0° | 10 | 20.12.1046 |
| | MBT | 6 7 | 4 mm | - | -20° | 0° | 10 | 20.12.1036 |



MBT 0.022" | SIMPLE, NON CONVERTIBLE TUBE

GLUING

| | PRESCRIPTION | USE | LENGHT | TUBE | TORQUE | DISTAL | QTY. | 0.22x0.28" |
|-------|--------------|-----|--------|------|--------|--------|------|----------------------------|
| Upper | MBT | 7 | 3.2mm | - | -14° | 10° | 10 | 20.12.1017 |
| | MBT | 7 | 3.2mm | - | -14° | 10° | 10 | 20.12.1027 |
| Lower | MBT | 7 | 3.2mm | - | -25° | 4° | 10 | 20.12.1047 |
| | MBT | 7 | 3.2mm | - | -25° | 4° | 10 | 20.12.1037 |

PRESCRIPTION





AdvancedSeries®

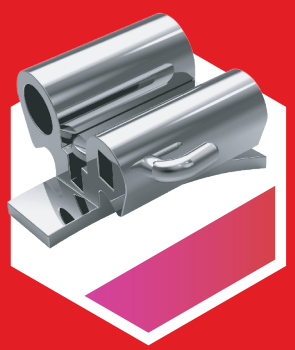
EDGEWISE/RICKETTS 0.022" |
SIMPLE, NON-CONVERTIBLE GLUING TUBE

GLUING

| | PRESCRIPTION | USE | LENGHT | TUBE | TORQUE | DISTAL | QTY. | 0.22x0.28" |
|-------|--------------|-----|--------|------|--------|--------|------|------------|
| Upper | EDGEWISE | 7 6 | 5.0mm | - | 0° | 0° | 10 | 21.22.1017 |
| | EDGEWISE | 6 7 | 5.0mm | - | 0° | 0° | 10 | 21.22.1017 |
| Lower | EDGEWISE | 7 6 | 5.0mm | - | 0° | 0° | 10 | 21.22.1017 |
| | EDGEWISE | 6 7 | 5.0mm | - | 0° | 0° | 10 | 21.22.1017 |



ORTHODONTIC TUBES





Orthodontic Bands



ORTHOMETRIC ORTHODONTIC BANDS

Orthodontic bands consist of a stainless-steel ring anatomically fitted around the dental crown, indicated as a fixation point for orthodontic accessories.

The bands help to treat when there are malocclusions, which require a more robust anchoring system, or when bonding is not possible.

Orthometric bands have a superior finish for better fitting to the tooth's anatomy, preserving the integrity of the enamel at the time of insertion and removal;

Made of austenitic stainless steel – 304, with perimeters ranging from 28 to 42 mm, corresponding to the perimeters of the teeth.

DIFFERENTIALS:

- Anatomical design;
- Better fitting to the tooth;
- Smooth, burr-free edges with a superior finish;
- Does not damage the enamel;
- Less plaque retention thanks to the design of the parts;
- Permanent marking;
- Easy identification.





Orthodontic Bands

UPPER | UNIVERSAL BANDS FOR MOLARS

| PRESCRIPTION | LENGHT | QTY. | CODES |
|--------------|---------|------|------------|
| UPPER | 28 mm | 10 | 40.02.0280 |
| UPPER | 28.5 mm | 10 | 40.02.0285 |
| UPPER | 29 mm | 10 | 40.02.0290 |
| UPPER | 29.5 mm | 10 | 40.02.0295 |
| UPPER | 30 mm | 10 | 40.02.0300 |
| UPPER | 30.5 mm | 10 | 40.02.0305 |
| UPPER | 31 mm | 10 | 40.02.0310 |
| UPPER | 31.5 mm | 10 | 40.02.0315 |
| UPPER | 32 mm | 10 | 40.02.0320 |
| UPPER | 32.5 mm | 10 | 40.02.0325 |
| UPPER | 33 mm | 10 | 40.02.0330 |
| UPPER | 33.5 mm | 10 | 40.02.0335 |
| UPPER | 34 mm | 10 | 40.02.0340 |
| UPPER | 34.5 mm | 10 | 40.02.0345 |
| UPPER | 35 mm | 10 | 40.02.0350 |
| UPPER | 35.5 mm | 10 | 40.02.0355 |
| UPPER | 36 mm | 10 | 40.02.0360 |
| UPPER | 36.5 mm | 10 | 40.02.0365 |
| UPPER | 37 mm | 10 | 40.02.0370 |
| UPPER | 37.5 mm | 10 | 40.02.0375 |
| UPPER | 38 mm | 10 | 40.02.0380 |
| UPPER | 38.5 mm | 10 | 40.02.0385 |
| UPPER | 39 mm | 10 | 40.02.0390 |
| UPPER | 39.5 mm | 10 | 40.02.0395 |
| UPPER | 40 mm | 10 | 40.02.0400 |
| UPPER | 40.5 mm | 10 | 40.02.0405 |
| UPPER | 41 mm | 10 | 40.02.0410 |
| UPPER | 41.5 mm | 10 | 40.02.0415 |
| UPPER | 42 mm | 10 | 40.02.0420 |

ORTHODONTIC BANDS

PRESCRIPTION



Upper Band Kit 190 units

Orthodontic Bands

LOWER | UNIVERSAL BANDS FOR MOLARS

| PRESCRIPTION | LEGT | QTY. | CODES |
|--------------|---------|------|------------|
| LOWER | 28 mm | 10 | 40.01.0280 |
| LOWER | 28.5 mm | 10 | 40.01.0285 |
| LOWER | 29 mm | 10 | 40.01.0290 |
| LOWER | 29.5 mm | 10 | 40.01.0295 |
| LOWER | 30 mm | 10 | 40.01.0300 |
| LOWER | 30.5 mm | 10 | 40.01.0305 |
| LOWER | 31 mm | 10 | 40.01.0310 |
| LOWER | 31.5 mm | 10 | 40.01.0315 |
| LOWER | 32 mm | 10 | 40.01.0320 |
| LOWER | 32.5 mm | 10 | 40.01.0325 |
| LOWER | 33 mm | 10 | 40.01.0330 |
| LOWER | 33.5 mm | 10 | 40.01.0335 |
| LOWER | 34 mm | 10 | 40.01.0340 |
| LOWER | 34.5 mm | 10 | 40.01.0345 |
| LOWER | 35 mm | 10 | 40.01.0350 |
| LOWER | 35.5 mm | 10 | 40.01.0355 |
| LOWER | 36 mm | 10 | 40.01.0360 |
| LOWER | 36.5 mm | 10 | 40.01.0365 |
| LOWER | 37 mm | 10 | 40.01.0370 |
| LOWER | 37.5 mm | 10 | 40.01.0375 |
| LOWER | 38 mm | 10 | 40.01.0380 |
| LOWER | 38.5 mm | 10 | 40.01.0385 |
| LOWER | 39 mm | 10 | 40.01.0390 |
| LOWER | 39.5 mm | 10 | 40.01.0395 |
| LOWER | 40 mm | 10 | 40.01.0400 |
| LOWER | 40.5 mm | 10 | 40.01.0405 |
| LOWER | 41 mm | 10 | 40.01.0410 |
| LOWER | 41.5 mm | 10 | 40.01.0415 |
| LOWER | 42 mm | 10 | 40.01.0420 |

PRESCRIPTION | CODE

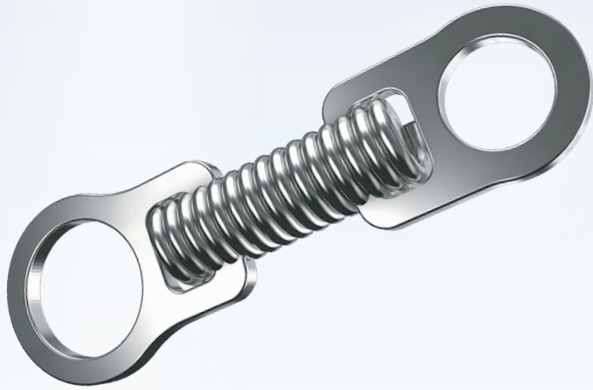
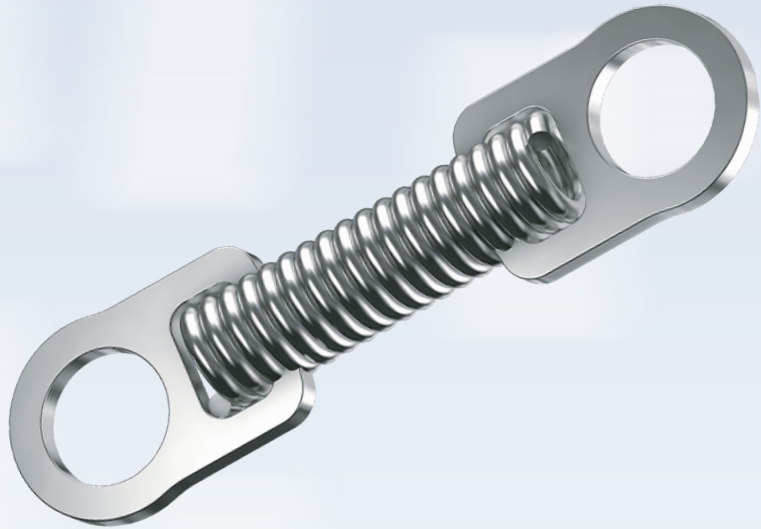


Lower Band Kit 190 units



ORTHODONTIC BANDS





Springs

Orthodontic

FLEXY NITI CLOSE SPRINGS

Orthometric Close Springs are able to close spaces with lowintensity forces in a constant way, providing a safer and more predictable result.

They are ideal for mini-implants as they have smaller fixation rings, which are made in the spring structure itself, avoiding the risk of breakage.

PHYSICAL CHARACTERISTICS AND MECHANICAL PROPERTIES:

- Resilience;
- Flexibility;
- Biocompatibility;
- Elasticity;
- Great shape memory;
- Smooth and steady force release;
- Longer activation intervals.

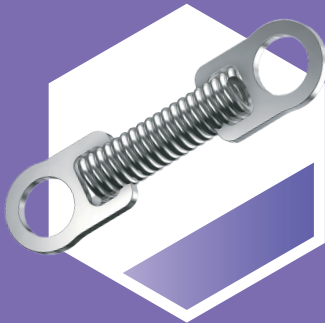
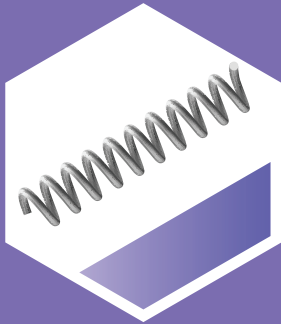
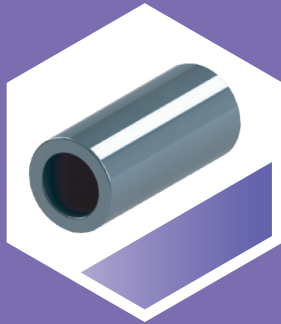
INDICATIONS:

- Retraction of anterior teeth and mesialization of posterior teeth to close spaces;
- Patients who need controlled and gentle forces.



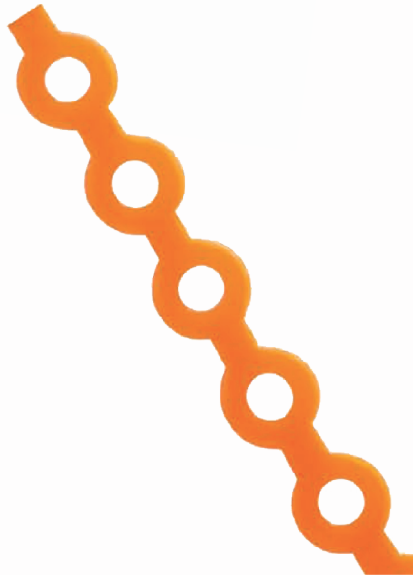
FLEXY NITI SPRINGS | CLOSE SPRING

| PRESCRIPTION | DIMENSIONS | QTY. | CODE |
|--------------|------------|------|------------|
| CLOSE SPRING | 7mm | 04 | 35.20.0007 |
| CLOSE SPRING | 9mm | 04 | 35.20.0009 |
| CLOSE SPRING | 12mm | 04 | 35.20.0012 |
| CLOSE SPRING | 15mm | 04 | 35.20.0015 |





ELASTICS



ORTHOMETRIC ELASTIC LINE

The “Elastomerics Orthometric” line of elastics is composed of Stick Ligatures, Modular Ligatures, Elastics in Chains, Intraoral and Extraoral Elastics, Elastic Separators and Elastic Positioners.

All polymers, pigments and additives used by Orthometric are for medical use.

We select specific polymers that are more resistant to absorption and pigmentation, thus ensuring less color change and deformation during use.

National Production

Orthometric ligatures are produced in the factory in Marília, using state-of-the-art technology and a research center where several quality tests are carried out, always thinking about guaranteeing the best product with the best cost-benefit ratio.





ELASTOMERIC

ELASTIC | IN CHAIN – SHORT, MEDIUM AND LONG CHAIN (4,5M)

| SHORT | MEDIUM | LONG | DIMENSIONS | COLORS |
|------------|------------|------------|------------|----------------|
| 60.05.5101 | 60.05.6101 | 60.05.7101 | 4,5M | BLUE |
| 60.05.5102 | 60.05.6102 | 60.05.7102 | 4,5M | RED |
| 60.05.5103 | 60.05.6103 | 60.05.7103 | 4,5M | PINK |
| 60.05.5104 | 60.05.6104 | 60.05.7104 | 4,5M | BLACK |
| 60.05.5105 | 60.05.6105 | 60.05.7105 | 4,5M | SEA GREEN |
| 60.05.5106 | 60.05.6106 | 60.05.7106 | 4,5M | CRYSTAL GREEN |
| 60.05.5107 | 60.05.6107 | 60.05.7107 | 4,5M | CRYSTAL PINK |
| 60.05.5108 | 60.05.6108 | 60.05.7108 | 4,5M | GREY |
| 60.05.5109 | 60.05.6109 | 60.05.7109 | 4,5M | CRYSTAL |
| 60.05.5110 | 60.05.6110 | 60.05.7110 | 4,5M | CRYSTAL BLUE |
| 60.05.5111 | 60.05.6111 | 60.05.7111 | 4,5M | NAVY BLUE |
| 60.05.5112 | 60.05.6112 | 60.05.7112 | 4,5M | PURPLE |
| 60.05.5113 | 60.05.6113 | 60.05.7113 | 4,5M | WHITE |
| 60.05.5114 | 60.05.6114 | 60.05.7114 | 4,5M | YELLOW |
| 60.05.5115 | 60.05.6115 | 60.05.7115 | 4,5M | CRYSTAL YELLOW |
| 60.05.5116 | 60.05.6116 | 60.05.7116 | 4,5M | LIGHT PURPLE |
| 60.05.5117 | 60.05.6117 | 60.05.7117 | 4,5M | LEMON YELLOW |
| 60.05.5118 | 60.05.6118 | 60.05.7118 | 4,5M | SILVER |
| 60.05.5119 | 60.05.6119 | 60.05.7119 | 4,5M | CRYSTAL PINK |
| 60.05.5120 | 60.05.6120 | 60.05.7120 | 4,5M | BABY BLUE |
| 60.05.5121 | 60.05.6121 | 60.05.7121 | 4,5M | BABY PINK |
| 60.05.5122 | 60.05.6122 | 60.05.7122 | 4,5M | CRYSTAL RED |
| 60.05.5123 | 60.05.6123 | 60.05.7123 | 4,5M | CRYSTAL ORANGE |
| 60.05.5124 | 60.05.6124 | 60.05.7124 | 4,5M | PEARL |
| 60.05.5125 | 60.05.6125 | 60.05.7125 | 4,5M | PEARL BLUE |
| 60.05.5126 | 60.05.6126 | 60.05.7126 | 4,5M | PEARL GREEN |
| 60.05.5127 | 60.05.6127 | 60.05.7127 | 4,5M | MOSS GREEN |
| 60.05.5128 | 60.05.6128 | 60.05.7128 | 4,5M | CRYSTAL GRAPE |
| 60.05.5129 | 60.05.6129 | 60.05.7129 | 4,5M | WINE |
| 60.05.5130 | 60.05.6130 | 60.05.7130 | 4,5M | GOLDEN |



MODULAR ELASTICS:

Maximum Clinical Efficiency

Orthometric modular ligatures are manufactured with a unique design that facilitates the application of ligatures and their fitting to the bracket wings;

Elasticity

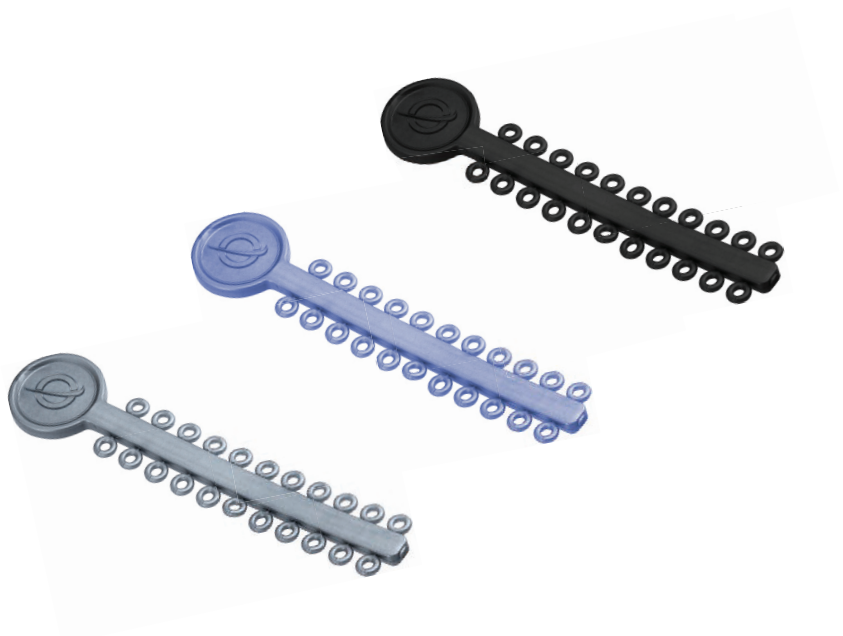
They have excellent elasticity, keeping their force active for longer and meeting all memory and resistance requirements to provide an efficient and high-quality treatment;

Cross Contamination

They are presented in modules with 22 ligatures, allowing the individualization of the product and preventing possible cross-contamination;

Esthetic Treatments

For esthetic treatments, the line offers three different colors: Crystal, Pearl and Pearl Blue, all of them presenting excellent resistance to pigmentation and providing the so desired invisibility in esthetic treatments.





ELASTOMERICS

LIGATURE | MODULAR

| LIGATURE | COLORS | CODE |
|----------|----------------|------------|
| MODULAR | BLUE | 60.06.1001 |
| MODULAR | RED | 60.06.1002 |
| MODULAR | PINK | 60.06.1003 |
| MODULAR | BLACK | 60.06.1004 |
| MODULAR | SEA GREEN | 60.06.1005 |
| MODULAR | CRYSTAL GREEN | 60.06.1006 |
| MODULAR | CRYSTAL PINK | 60.06.1007 |
| MODULAR | GREY | 60.06.1008 |
| MODULAR | CRYSTAL | 60.06.1009 |
| MODULAR | CRYSTAL BLUE | 60.06.1010 |
| MODULAR | NAVY BLUE | 60.06.1011 |
| MODULAR | PURPLE | 60.06.1012 |
| MODULAR | WHITE | 60.06.1013 |
| MODULAR | YELLOW | 60.06.1014 |
| MODULAR | CRYSTAL YELLOW | 60.06.1015 |
| MODULAR | LIGHT PURPLE | 60.06.1016 |
| MODULAR | LEMON YELLOW | 60.06.1017 |
| MODULAR | SILVER | 60.06.1018 |
| MODULAR | BABY PINK | 60.06.1019 |
| MODULAR | BABY BLUE | 60.06.1020 |
| MODULAR | CRYSTAL PINK | 60.06.1021 |
| MODULAR | CRYSTAL RED | 60.06.1022 |
| MODULAR | CRYSTAL ORANGE | 60.06.1023 |
| MODULAR | PEARL | 60.06.1024 |
| MODULAR | PEARL BLUE | 60.06.1025 |
| MODULAR | ASSORTED | 60.06.1050 |
| MODULAR | PEARL GREEN | 60.06.1051 |
| MODULAR | MOSS GREEN | 60.06.1052 |
| MODULAR | CRYSTAL GRAPE | 60.06.1053 |
| MODULAR | WINE | 60.06.1054 |
| MODULAR | GOLDEN | 60.06.1055 |



SEPARATOR ELASTIC

Radiopaque separating elastics are used to open the interdental space required for the band placing procedure.

It presents the characteristic of being evidenced in radiographs.

They can remain in place only for a week to promote the separation of the teeth and creating space.

ELASTOMEROS | SEPARATOR

ELASTOMERS

DIMENSIONS

GREEN SEPARATOR

Ø 3/16"



ELASTOMERS | SEPARATOR

ELASTOMERS

DIMENSIONS

BLUE SEPARATOR

Ø 5/32"









Orthodontic Adhesive

Ortholink

VLC

ORTHOLINK VLC:

Ortholink VLC (Visible Light Cure) is the light-curing adhesive system that offers the clinician total polymerization control, with stable bracket positioning and an immediate response after light curing induction.

It is indicated for bonding all types of brackets on all types of enamel, with efficient and reliable results.

DIFFERENTIALS:

- Light-curing orthodontic bonding system (light activated);
- Can be used for bonding esthetic brackets;
- Makes positioning easier;
- Excellent retention;
- Durability.

PACKAGING

- Kit VLC 5g:

1 Adhesive Paste Syringe 5 g

1 Primer 3 ml

1 Phosphoric Acid 3 ml







ORTHOMETRIC®

Helping the World Smile



FOLLOW ORTHOMETRIC ON SOCIAL MEDIAS

WWW.ORTHOMETRIC.COM.BR



